

How our Healthy Country Plan fits together

An adaptive management process to ensure we reach our Vision

TARGETS

What we will protect & manage?

- ▶ Cultural Sites
- ▶ Granites
- ▶ Coast
- ▶ Islands
- ▶ Wetlands & Rivers
- ▶ Native Animals
- ▶ Native Plants

THREATS

What needs to be reduced to make the Targets healthy?

- ▶ Loss of Traditional knowledge & land practices
- ▶ Lack of resources
- ▶ No respect for culture or rights
- ▶ Climate change: increase in extreme events
- ▶ Wildlife
- ▶ Rubbish / Litter
- ▶ Unmanaged 4WD and ORV use
- ▶ Introduced animals
- ▶ Coastal Erosion
- ▶ Overfishing
- ▶ Dieback
- ▶ Water pollution: Agricultural & urban chemicals

PROGRAMS AND STRATEGIES

What actions will be taken to build capacity, reduce Threats and improve Targets?

Project Management & Capacity Development

- Capacity Building & Skills Development
- Coordinate & manage Tjaltjraak Ranger Program to implement the plan
- Develop & manage partnerships and agreements with key organisations
- Develop alternative funding streams to maintain the Ranger Program

Conservation and Land Management

- Ranger Patrols
- Monitor and manage cultural sites
- Manage and enforce appropriate visitor behaviour
- Manage invasive species
- Manage Dieback
- Re-establish cultural burning practices
- Manage wetlands for cultural & ecological values

Land and Sea Rights & Responsibilities

- Manage Esperance Nyungar Reserves (eg/ Merivale)
- Establish an IPA
- Joint Management of public conservation lands
- Partner with other organisations to work on other land
- Pursue Native Title Sea Claim

Culture and Heritage

- Survey and Protect Cultural sites
- Maintain ETNTAC cultural heritage database
- Cultural learning program for families and young Nyungars
- Strengthen and use traditional knowledge

Tjaltjraak Indigenous Protected Area

A Summary of the Healthy Country Plan for the Esperance Nyungar Country 2019–2025

We have chosen to dedicate nearly one million hectares of our native title land as an Indigenous Protected Area.



Background

Esperance Tjaltjraak Native Title Aboriginal Corporation (ETNTAC) have been leading the development of a Healthy Country Plan (HCP) for their Country, aimed at establishing a Tjaltjraak Ranger Program and providing secure futures for their culture, people and Country. We followed the HCP process, an adaptive management approach that is used throughout Australia and being adopted by other indigenous land managers overseas¹. Our use of the approach

was guided by our Elders and also included the participation of many of our young people. The ETNTAC Board is yet to endorse the final version of the HCP so this summary is provided until then. Once endorsed, we will have a Strategic Plan setting our direction for 10 years; a Work and Monitoring Plan with more detail for the first 3 years of our Plan implementation; and a summary document for communication with others who want to know what we are doing.

OUR VISION

We work to care for our people, our land, our seas and our culture to create benefits for individuals and for the community as a whole as guided by the laws and customs handed down by our ancestors. Our Country is well-managed and our cultural and biodiversity values are protected.

Our Targets

Our Targets are the things that we need to work on to make our Country healthy so we can reach our Vision. We grouped a lot of other parts of our Culture and Country within these Targets, and we used some features of them to make an estimate of how healthy they are now and how healthy we want them to be in future. These features and the indicators we identified for them will be part of our Rangers' monitoring plan and include both cultural and ecological aspects of the Targets. Our Targets are:

- Cultural places
- Granite outcrops
- Wetlands (lakes and rivers)
- Coast
- Important plants (significant culturally or for conservation).
- Islands
- Important animals (significant culturally or for conservation).

Threats to our Targets

We identified a lot of Threats, which are the things that make our Targets unhealthy. We rated them according to how widespread they are and how much damage they can cause to each Target. When we identified the Targets we also talked a lot about what is driving them and what other opportunities there may be to work with other organisations to increase our chances of making the amount of change we need if our Country is to be healthy for future generations.

The current health of our Targets

These are average scores. There are some places within each Target that are very healthy and others that are very poor. Once we have our Rangers monitoring our Country, we will keep updating this Table.

Target	Status (Average Health Score)
Cultural sites	Poor
Granites	Fair
Wetlands (lakes and rivers)	Fair
Native animals	Fair
Native plants	Fair
Coast (mainland coast)	Good
Islands	Good
Project area status (All Esperance Nyungar Country)	Fair

Our aim is to eventually make as many of the squares as possible green: that is, the Targets are as healthy as they can be over as much Esperance Nyungar Country as possible. This will be a gradual process and may take many years, but we intend to keep working on this for generations. For the squares that are already green (i.e. Targets that are healthy now), we aim to keep them as healthy as this in the future.

The current rating of the Threats to our Targets

Threats \ Targets	Cultural places	Granites	Wetlands and rivers	Native Animals	Native plants	Coast	Islands	Summary Rating
Dieback	Medium	High	Medium	Medium	High	Very High	Medium	High
Climate change	Medium	High	High	High	Medium	High	High	High
Lack of respect for culture	High	High	High	High	Medium	Medium	High	High
Lack of resources	High	Medium	High	High	High	High	Medium	High
Weeds	High	High	High	High	Medium	High	Medium	High
Introduced animals	High	High	High	High	Medium	Medium	Medium	High
Wildfire	Medium	High	Medium	Medium	High	High	High	High
Rubbish, litter	High	Medium	Medium		Medium	High	Medium	High
Changed hydrology			High			Medium		High
Loss of TEK	Very High	Medium	Medium	Medium	Medium	Medium	Medium	High
Irresponsible ORV use	High	Medium	Medium			High		Medium
Water pollution	Medium		High					Medium
Coastal erosion						High		Medium
Water pollution (oil)			Medium			Medium	Low	Medium
Overfishing						Medium	Medium	Medium
Summary Ratings	Very High	Very High	Very High	High	High	Very High	High	Very High

Program & Strategies

Once we had focused on what Targets and Threats we need to work on, we identified the Strategies we need. Each Strategy includes Objectives and a series of Actions, which are the steps we need to take to carry out the Strategy. The Objectives give us some measures to show if we are making progress and we will include them in our Rangers monitoring plan.

The Strategies are grouped into 4 main Programs:

Program	Strategies within the Program
Program Management and Capacity Development	<ul style="list-style-type: none">Capacity building and skills development (getting people, training, equipment and funding)Coordinating and managing the Tjaltjraak Ranger Program to implement the HCP (coordinators, organisational systems, reporting)Develop and manage partnerships and agreements with key organisationsDevelop commercial opportunities to fund the Ranger Program in the longer term
Land & Sea Rights and Responsibilities	<ul style="list-style-type: none">Manage Esperance Nyungar vested landsPursue joint management of public conservation reservesDevelop an Indigenous Protected Area (IPA) proposalPartner with other organisations to work on their land (if consistent with HCP or a commercial opportunity)Continue to work to establish Native Title over sea areas
Cultural and Heritage	<ul style="list-style-type: none">Survey and protect cultural sitesMaintain and expand ETNTAC cultural heritage databaseCultural learning program for families and young Esperance Nyungar peopleStrengthen and use Traditional Knowledge (including throughout regional planning and decision-making)
Conservation Land Management	<ul style="list-style-type: none">Ranger patrolsMonitoring and management of cultural sitesManage diebackManage invasive speciesManage visitor behaviourRe-establish cultural burning practicesProtect and improve the condition of wetlands

Monitoring, reviewing & adapting the plan

The HCP is an adaptive management process – we need to observe, record what we see, and review it together to keep improving the HCP. We are establishing a process to do this which looks at three levels of review: are we doing the actions required in the Plan? Are the actions helping to meet our Strategy Objectives in the way we thought they would? Are our Targets getting healthier? Rangers will report through their Coordinator to the ETNTAC Board and the Elders, and more extensive reviews of the Plan will be built in every 3-5 years.

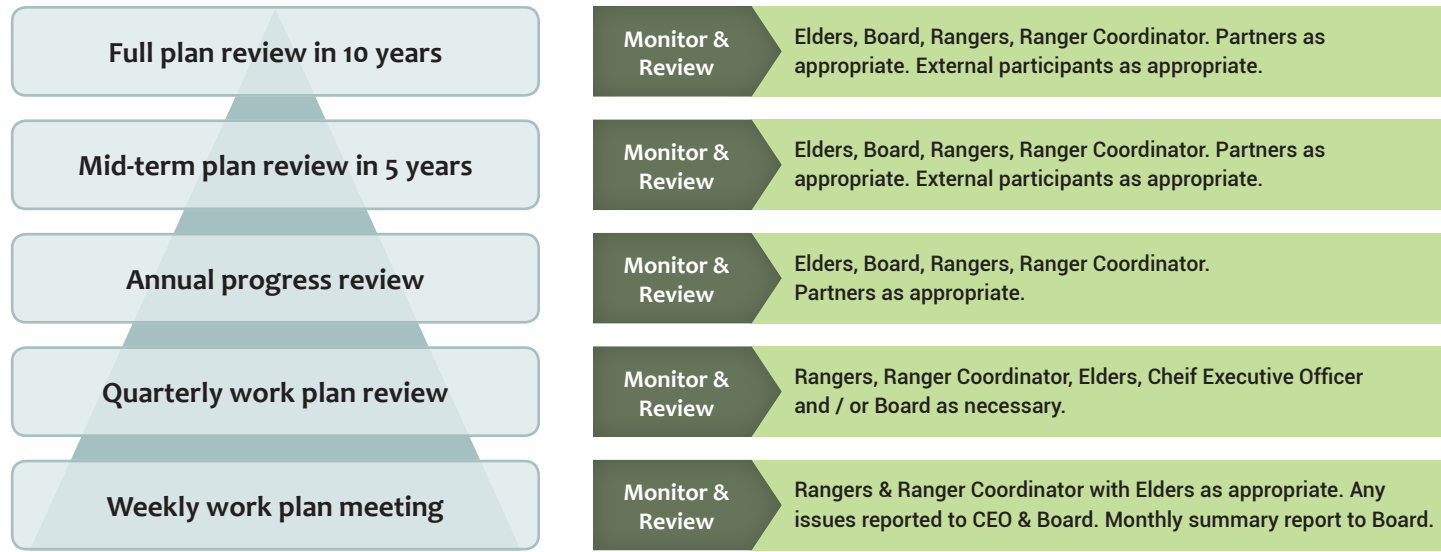


Figure above: Review and Adaption Hierarchy, Timeline & Review Reporting